

VISION

Font Catalog

Copyright©2005 Vision Engraving Systems. All rights reserved.

This publication is protected by copyright, and all rights are reserved. No part of this manual may be reproduced or transmitted by any means or in any form, without prior written consent from Vision.

Limits of Liability/Disclaimer of Warranty for this Font Catalog:

The information contained within this catalog has been carefully checked and is believed to be accurate. However, Vision makes no representations or warranties for this catalog, and assumes no responsibility for inaccuracies, errors, or omissions that may be contained within this manual. In no event shall Vision be liable for any loss of profit including (but not limited to) direct, indirect, special, incidental, consequential, or other damages resulting from any defect or omission in this catalog, even if previously advised of the possibility of such damages.

In the interest of continued product development, Vision reserves the right to make improvements in this catalog and the products it describes at any time, without notice or obligation.

How to use this catalog

This Font Catalog is designed to show you all of the fonts created for your engraving system. Each font is printed in a readable size so you can examine the details and particular styles of each font. All the fonts displayed in this catalog are in a vector format.

To find the font you desire: consult the table of contents, find the name of the desired font, and reference the page displayed to the right of the font names. We've also included an alphabetical index on page 38.

Some fonts are altered in size to accommodate space restrictions. Each font representation is created from the actual font. Your selection of cutting tools, materials, and engraving methods will affect the final engraving and can vary from the displayed fonts.

Many fonts feature international characters. To use the international characters, hold the alt key down on the keyboard and type the ascii code for that character from the keypad. then release the alt key. Please refer to the chart below for the correct ascii codes.

Note: International characters contained in each font vary, and are not in every font.

Ascii Characters

126	~	136	ê	145	æ	154	Û	165	Ñ	181	Á	209	Ð	225	ß	237	Ý
128	Ç	137	ë	146	Æ	155	ø	166	ª	182	Â	210	Ê	226	Ô	241	±
129	ü	138	è	147	ô	156	£	168	¿	183	À	211	Ë	227	Ò	243	¾
130	é	139	ì	148	ö	157	Ø	169	®	184	©	212	È	228	õ		
131	â	140	î	149	ò	160	á	171	½	185	<	214	í	229	Õ		
132	ä	141	ì	150	û	161	í	172	¼	186	>	215	î	233	Ú		
133	à	142	Ä	151	ù	162	ó	173	ì	189	¢	216	ï	234	Û		
134	å	143	Å	152	ÿ	163	ú	174	«	198	ã	222	ì	235	Ü		
135	ç	144	É	153	Ö	164	ñ	175	»	199	Ã	224	Ó	236	ý		

Single Line Fonts

Avalon.....5
Connected Script.....5
 CONTEMPORARY.....5
 Din 1451.....6
 FUTURA 1 LINE.....6
 German Gothic.....6
 Gothic.....7
 Handel.....7
 Helvetica 1 Line.....7
 STENCIL G()THIC.....8
 Szymie 1 Line.....8

Multiple Line Fonts

2 Line Script.....9
BLOCK.....9
BOWLBALL.....9
 Century.....10
Commercial Script.....10
Flora Bold.....10
 Flora Normal.....11
 Fritz Medium.....11
 Helvetica 3 Line.....11
Helvetica 6 Line.....12
 Olde English 3 Line.....12
 Optima 5 Line.....12
 ROMAN 3 LINE.....13
 Roman.....13
 Times 3 Line.....13
 Universe 39.....14
Universe 55.....14
Victoria Script.....14














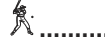




Outline Fonts

Baskerville.....15
Clarendon Outline.....15
 Dynamo Outline.....15
 Fritz Outline.....16
 Goudy Outline.....16
 Micro Outline.....16
 Souvenir Outline.....17
 STENCIL OUTLINE.....17
 Tbkout.....17
 Times Outline.....18
 Trimvir.....18

Specialty Fonts

..... BRAILLE.....19
..... CIRCMONO.....20
..... RUSSIAN.....20
..... GREEK1.....20

Picture Fonts

..... ANIMALS.....21
..... ARROWS.....22
..... BORDERS.....23
..... BUSINESS.....23
..... CORNERS.....24
..... CREDIT.....24
..... DESIGNS.....25
..... FOODS.....25
..... HOLIDAYS.....26
..... MEDALS.....26
..... ORNAMENT.....27
..... ORNMENT2.....27
..... RELIGION.....28
..... SCHOOL.....28
..... SPORTS.....29
..... STATES.....29
..... UTILITY.....30
..... INTLSYM.....30

Logos

Fun Designs.....32
 Boats.....33
 Bears.....34
 Ornaments.....35
 Sports.....36
 ALPHABETICAL INDEX.....38

AVALON

Avalon

ABCDEFGHIJKLMNOPQRSTUVWXYZ
 abcdefghijklmnopqrstuvwxyz1234567890
 ~!@#\$%^&*()-+=!\(){};:"'/?.,äåãâáÒÑ
 ÇüéâäàåçêëèìîïÄÅéêëìíñó®µ¶½ÆÇ
 ÉæÆôöòûùÿÖÜø£Øáç£¥©«ÓÔÖØþà

CONSCRIPT

Connected Script

*ABCDEFGHIJKLMNOPQRSTUVWXYZ
 abcdefghijklmnopqrstuvwxyz1234567890
 !@#\$%&()~+=;: ' " /?.,£*

CONTMP

CONTEMPORARY

ABCDEFGHIJKLMNOPQRSTUVWXYZ
 ABCDEFGHIJKLMNOPQRSTUVWXYZ
 1234567890!@#\$%&*
 ()+=.,£

Din 1451

DIN1451

ABCDEFGHIJKLMNOPQRSTUVWXYZ
 abcdefghijklmnopqrstuvwxyz1234567890
 !# \$%&*()-+=:;'"/?.,äåãâáÒÑ
 ÇüéâäàâçêëèîïÄÅéêëìíñóÆÇ
 ÉæÆôöòûùÖÜø£Øáí£‹ÓÔÕØà

FUTURA 1 LINE

FUT1LINE

ABCDEFGHIJKLMNOPQRSTUVWXYZ
 ABCDEFGHIJKLMNOPQRSTUVWXYZ1234567890
 ‘~!#\$%^&()~+ = ! \ [] { } : ; ' " / ? . , ä å ã â á Ò Ñ
 ÇüéâäàâçêëèîïÄÅéêëìíñó®½ÆÇ
 ÉæÆôöòûùÿÖÜø£Øáí£©«ÓÔÕØà

German Gothic

FUT1LINE

ABCDEFGHIJKLMNOPQRSTUVWXYZ
 abcdefghijklmnopqrstuvwxyz
 1234567890

GOTHIC

Gothic

ABCDEFGHIJKLMNOPQRSTUVWXYZ
 abcdefghijklmnopqrstuvwxyz1234567890
 ‘~!@# \$%^&*()-+=!\[]{};:’”/?.äåãâáÒÑ
 ÇüéâäàåçêëèìîïËÄÉêëìíñó®½ÆÇ
 ÉæÆôöòûÿÖÜø£Øáíç£©«ÓÔÖØà

HANDEL

Handel

ABCDEFGHIJKLMNOPQRSTUVWXYZ
 abcdefghijklmnopqrstuvwxyz1234567890
 ‘~!@# \$%^&*()-+=!\[]{};:’”/?.äåãâáÒÑ
 ÇüéâäàåçêëèìîïËÄÉêëìíñó®½ÆÇ
 ÉæÆôöòûÿÖÜø£Øáíç£©«™ÓÔÖØà

HELVET1

Helvetica 1 Line

ABCDEFGHIJKLMNOPQRSTUVWXYZ
 abcdefghijklmnopqrstuvwxyz1234567890
 !@# \$%^&*()-+=:’”/?.äåãâáÒÑ
 ÇüéâäàåçêëèìîïËÄÉêëìíñó®½ÆÇ
 ÉæÆôöòûÿÖÜø£Øáíç£©«ÓÔÖØà

STENCIL G()THIC

STENGOTH

ABCDEFGHIJKLMN()PQRSTUVWXYZ
 123456789()

Stymie 1 Line

STYMIE

ABCDEFGHIJKLMNOPQRSTUVWXYZ
 abcdefghijklmnopqrstuvwxyz1234567890
 !@#\$%&•()~+*^_`/?.aaâáÂÃ
 ÇüéâàâçêèèîîÅÅéêèîîñóÈÚÃÆÇ
 ÉæÆôoòûùÿOUç£Êáí£°«ÓÔÊÔà

2LSCRIPT

2 Line Script

A B C D E F G H I J K L M N O P Q R S T U V W X Y Z

a b c d e f g h i j k l m n o p q r s t u v w x y z 1 2 3 4 5 6 7 8 9 0

! # \$ % & () - + = ; : ' " / ? . , ä å ä å ü é â ä à ç è è è ù è è è ù ñ ç ô ö ü ù ï á í ï à

BLOCK

BLOCK

A B C D E F G H I J K L M N O P Q R S T U V W X Y Z

A B C D E F G H I J K L M N O P Q R S T U V W X Y Z

1 2 3 4 5 6 7 8 9 0 ! # \$ % & * () + - = ? / . , £

BOWLBALL

BOWLBALL

A B C D E F G H I J K L M N O P Q R S T U V W X Y Z

A B C D E F G H I J K L M N O P Q R S T U V W X Y Z 1 2 3 4 5 6 7 8 9 0

˘ ~ ! @ # \$ % ^ & * O _ - ¢ = \ | } ; : ' " / ? . , ä å ã â á ò ñ

ç ü é â ä à ç è è è ù è è è ù ñ ó ® ½ Æ Ç

É Æ Æ ô ö ò û ù ÿ ö ü ø £ Ø Á ¡ ¢ £ © « Ó Ô Õ Ø À

Century

CENTURY

ABCDEFGHIJKLMNOPQRSTUVWXYZ
 abcdefghijklmnopqrstuvwxyz1234567890
 !#\$%&*()~ + = < > ; : ' " / ? . ,

Commercial Script

COMSCRIPT

*ABCDEFGHIJKLMNOPQRSTUVWXYZ
 abcdefghijklmnopqrstuvwxyz1234567890
 ‘~!@#%&^&#*()_ - + = | [] { } ; : “ / ? . , ä å â á Ñ
 Ç ü é â ä à å ç è ë ù ù Æ Á Á é ê ù ñ ó ½ £ ¤
 É æ Æ ö ò ù ù ÿ Ö Ü £ ¤ Æ ; £ « Ö × Ø à*

Flora Bold

FLORA-B

ABCDEFGHIJKLMNOPQRSTUVWXYZ
 abcdefghijklmnopqrstuvwxyz1234567890
 ‘!#\$%&*()_ - + = { } ; : ‘ ’ “ ” / ? . , œ Æ æ ø £ Ø ¡ ¢ “ œ Ø

FLORA-N

Flora Normal

ABCDEFGHIJKLMNOPQRSTUVWXYZ
 abcdefghijklmnopqrstuvwxyz1234567890
 '!#\$%&*()-_+={};:~"/?.,äåãâáÒÑ
 ÇüéâäàåçêëèìíîËÄéêëïíñóœÆÇ
 ÉæÆôöòûùÿÖÜø£Øáıç“ÓÔÕøà

FRITZMED

Fritz Medium

ABCDEFGHIJKLMNOPQRSTUVWXYZ
 abcdefghijklmnopqrstuvwxyz1234567890
 !@#\$%&*()-_+={};:~"/?.,£

HELVET3

Helvetica 3 Line

ABCDEFGHIJKLMNOPQRSTUVWXYZ
 abcdefghijklmnopqrstuvwxyz1234567890
 '~!@#\$%^&*0- + =\□{};:~"/?.,äåãâáÒÑ
 ÇüéâäàåçêëèìíîËÄéêëïíñó®½ÆÇ
 ÉæÆôöòûùÿÖÜø£Øáıç£©«ÓÔÕøà

Helvetica 6 Line

HELVET6L

ABCDEFGHIJKLMNOPQRSTUVWXYZ
 abcdefghijklmnopqrstuvwxyz1234567890
 ~!@#\$%^&*()-+ =!\[\]{};:'"/?.,äåãâáõÑ
 Çüéâäàçêëèìî`ÀÁéëèìíñó®½ÆÇ
 ÉæÆôöòùÿÖÜø£Øáíç£©«ÓÖØà

Olde English 3 Line

OLDENG3

ABCDEFGHIJKLMNOPQRSTUVWXYZ
 abcdefghijklmnopqrstuvwxyz1234567890&-'"/.,

Optima 5 Line

OPTIMA

ABCDEFGHIJKLMNOPQRSTUVWXYZ
 abcdefghijklmnopqrstuvwxyz1234567890
 !#\$%&*()-+;:'"/?.,£

ROMAN3L

ROMAN 3 LINE

ABCDEFGHIJKLMNOPQRSTUVWXYZ
 ABCDEFGHIJKLMNOPQRSTUVWXYZ1234567890
 '~!@#\$%^&*O_-+ =\|}{;:'"/?.,äåãâáõñ
 ÇüéâäåçêëëîïîËËéêëîïñó®½ÆÇ
 ÉÆÆôöòûùÿÖÜø£ØÁí¢£©«ÓÔÕØÀ

ULROMAN

Roman

ABCDEFGHIJKLMNOPQRSTUVWXYZ
 abcdefghijklmnopqrstuvwxyz1234567890
 '~!@#\$%^&*O_-+ =\|}{;:'"/?.,ääãâáõñ
 ÇüéääåçêëëîïîËËéêëîïñó®½ÆÇ
 ÉæÆôöòûùÿÖÜø£ØÁí¢£©«ÓÔÕØà

TIMES3

Times 3 Line

ABCDEFGHIJKLMNOPQRSTUVWXYZ
 abcdefghijklmnopqrstuvwxyz1234567890
 !@#\$%&*()-+=;:'"/?.,£

Universe 39

UNIVER39

ABCDEFGHIJKLMNOPQRSTUVWXYZ

abcdefghijklmnopqrstuvwxyz

1234567890!\$%&*()+-=?/..

ÇüéâäåàçêëèìíîÏÄÅÉæÆôöûüÿÖÜç£ØáíóúñÑ¿ÿi

«»ÁÂÃäãÄÊËÈÌÍÎÓßÔÕõÖÚÛÜø

Universe 55

UNIVER55

ABCDEFGHIJKLMNOPQRSTUVWXYZ

abcdefghijklmnopqrstuvwxyz1234567890

!\$%&*()_ - + = ; : ' " / ? . , ä å ã â á Ò Ñ

ÇüéâäåàçêëèìíîÏÄÅÉêëèíñóÿœÆÇ

Victoria Script

VICTORIA

*ABCDEFGHIJKLMNOPQRSTUVWXYZ**abcdefghijklmnopqrstuvwxyz1234567890**!@#\$%^&*()- + = ; : ' " . ,*

BASKERVL

Baskerville

ABCDEFGHIJKLMNOPQRSTUVWXYZ
 abcdefghijklmnopqrstuvwxyz1234567890
 `~!@#\$%^&*()_ - + = | \ [] { } ; : ' " / ? . ,

CLAROUT

Clarendon Outline

ABCDEFGHIJKLMNOPQRSTUVWXYZ
 abcdefghijklmnopqrstuvwxyz1234567890
 `~!@#\$%&*() - + = \ [] { } ; : ' " / ? . ,

DYNAMO

Dynamo Outline

ABCDEFGHIJKLMNOPQRSTUVWXYZ
 abcdefghijklmnopqrstuvwxyz1234567890
 !#£% " & * () - + = \ ; : ' " / ? . ,

Fritz Outline

FRITZOUT

ABCDEFGHIJKLMNOPQRSTUVWXYZ

abcdefghijklmnopqrstuvwxyz1234567890

`~!@#\$%^&*()_~+ = |[]{};:'"/?.,

Goudy Outline

GOUDYOUT

ABCDEFGHIJKLMNOPQRSTUVWXYZ

abcdefghijklmnopqrstuvwxyz1234567890

`~!@#\$%^&*()_~+ = |[]{};:'"/?.,

Micro Outline

MICROOUT

ABCDEFGHIJKLMNOPQRSTUVWXYZ

abcdefghijklmnopqrstuvwxyz1234567890

`~!@#\$%^&*()_~+ = |[]{};:'"/?.,

ITC_SOUV

Souvenir Outline

ABCDEFGHIJKLMNOPQRSTUVWXYZ
 abcdefghijklmnopqrstuvwxyz1234567890
 `~!@#\$%^&*()_+ = | \ [] { } ; : ' " / ? . ,

STENCIL

STENCIL OUTLINE

ABCDEFGHIJKLMNOPQRSTUVWXYZ
 1234567890 # & .

TBKOUT

Tbkout

ABCDEFGHIJKLMNOPQRSTUVWXYZ
 abcdefghijklmnopqrstuvwxyz1234567890
 `~!@#\$%^&*()_+ = | \ [] { } ; : ' " / ? . ,

Times Outline

TIMESOUT

ABCDEFGHIJKLMNOPQRSTUVWXYZ

abcdefghijklmnopqrstuvwxyz1234567890

!@#\$%^&*()_+ = |[]{};:'"/?.,

Trimvir

TRIMVIR

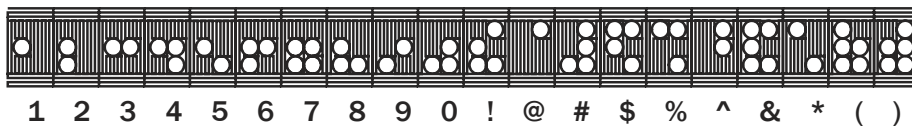
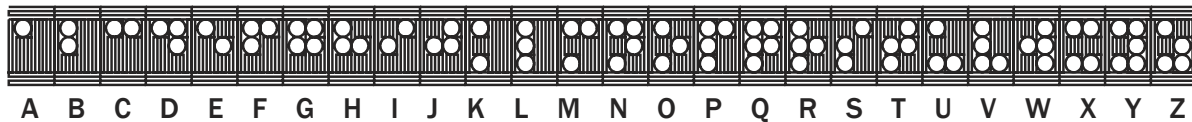
ABCDEFGHIJKLMNOPQRSTUVWXYZ

abcdefghijklmnopqrstuvwxyz1234567890

`~!@#\$%^&*()_+ = |[]{};:'"/?.,

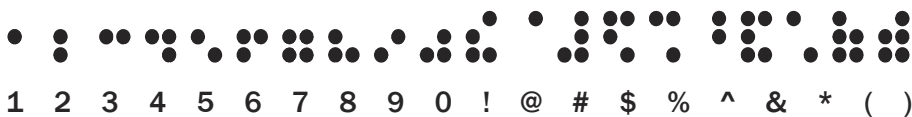
BRAILLE

ROUT OUT BRAILLE



BRAILLED

BRAILLE DRILL





CIRCMONO

AAA a A 1 BBB b B 2 CCC c C 3 DDD d D 4 EEE e E 5 FFF f F 6 GGG g G 7

HHH h H 8 III i I 9 JJJ j J 0 KKK k K - LL = m M ` n N !

OO @ PPP p P # QQQ q Q \$ RRR r R % SSS s S ^ TTT t T & UUU u U *

VVV v V (WWW w W) XXX x X _ YYY y Y + ZZZ z Z ,



RUSSIAN

АБЧДЕФГШИЖКЛМНОПЮРСТУВЭХЯЗ

A B C D E F G H I J K L M N O P Q R S T U V W X Y Z

абчдефгшижклмнопюрстувэхязЬёЕЩЦЬИЙЫЫ() : ;

a b c d e f g h i j k l m n o p q r s t u v w x y z 1 2 3 4 5 6 7 8 9 0



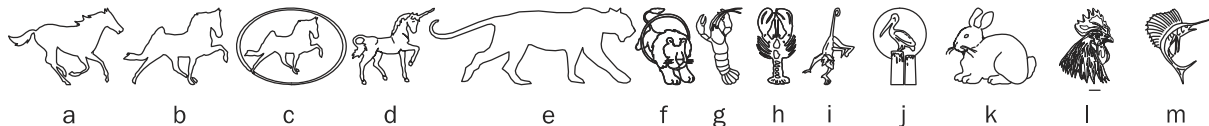
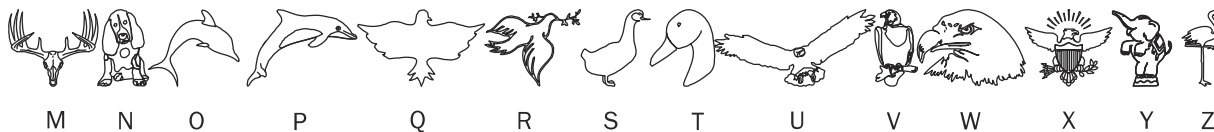
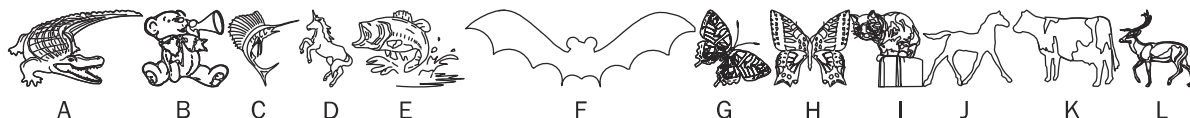
GREEK1

ΑΒΥΔΕΦΓΗΙΞΚΛΜΝΟΠΡΣΤΘΩΣΧΥΖ

αβψδεφνηιξκλμνοπρστϑωσχηυζ

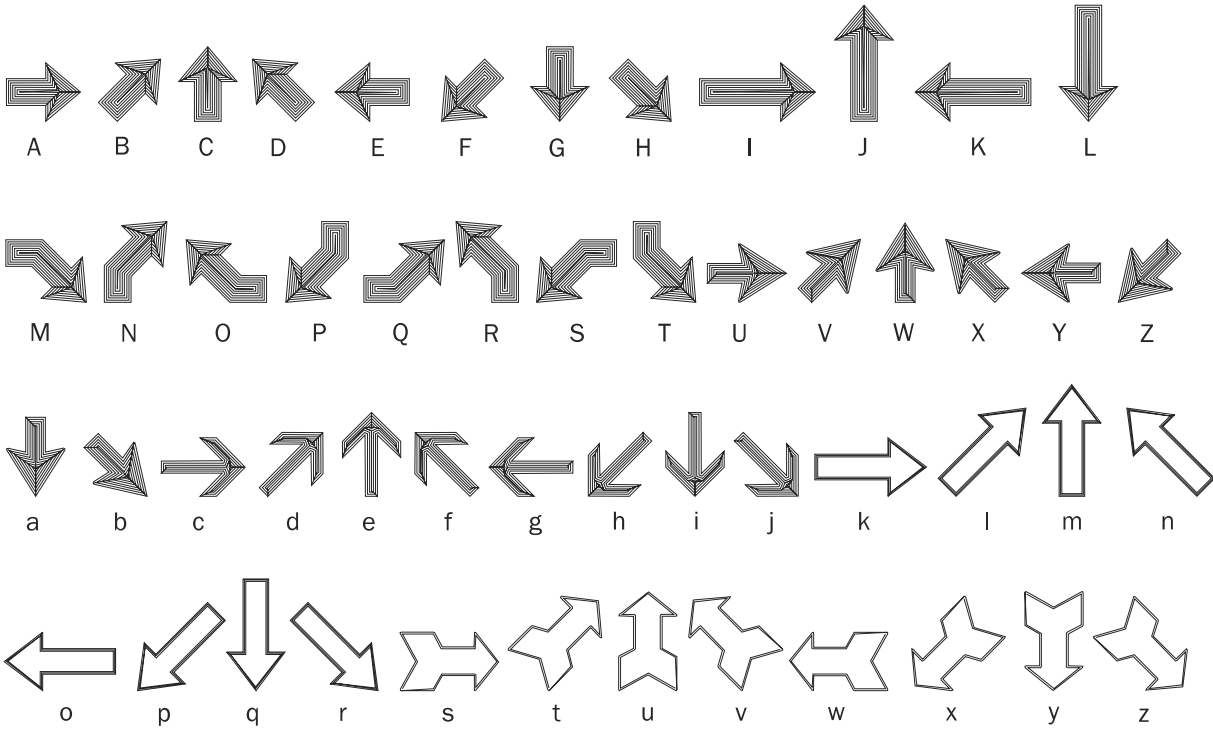
Picture fonts are a handy way to accentuate your design without creating individual logos.
 Simply load the desired font, and type in the corresponding letter or number.
 Note: You may need to use the Autoplate function to adjust the size of your graphic.

ANIMALS

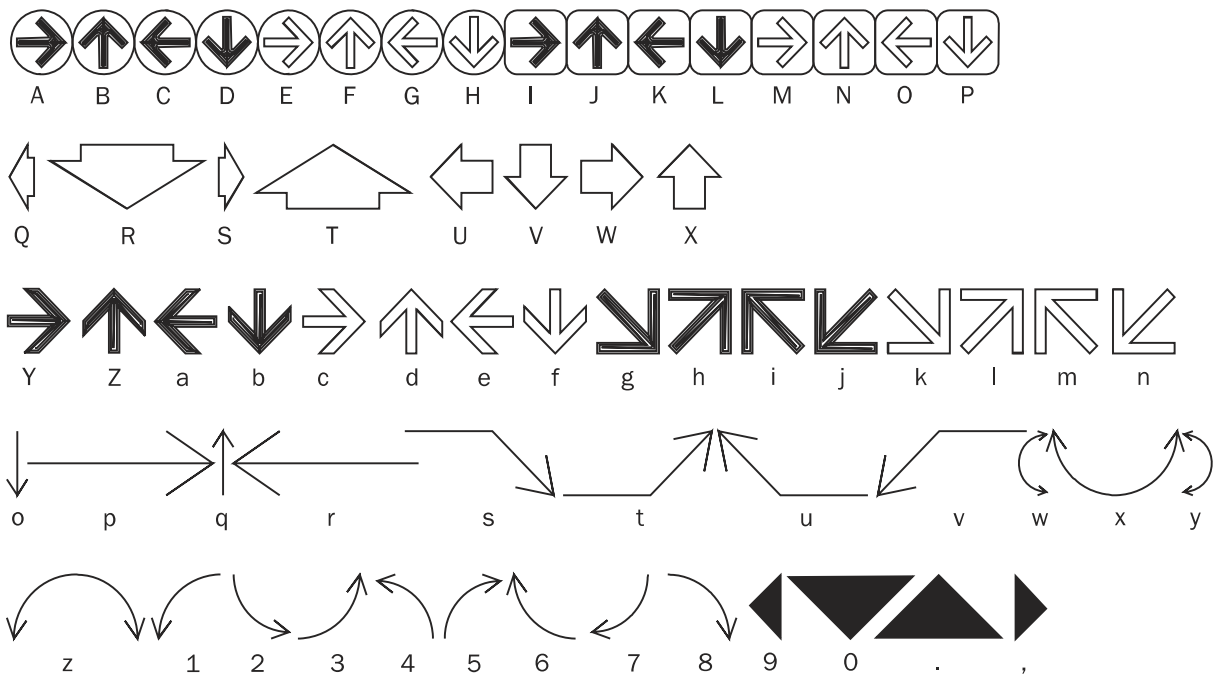




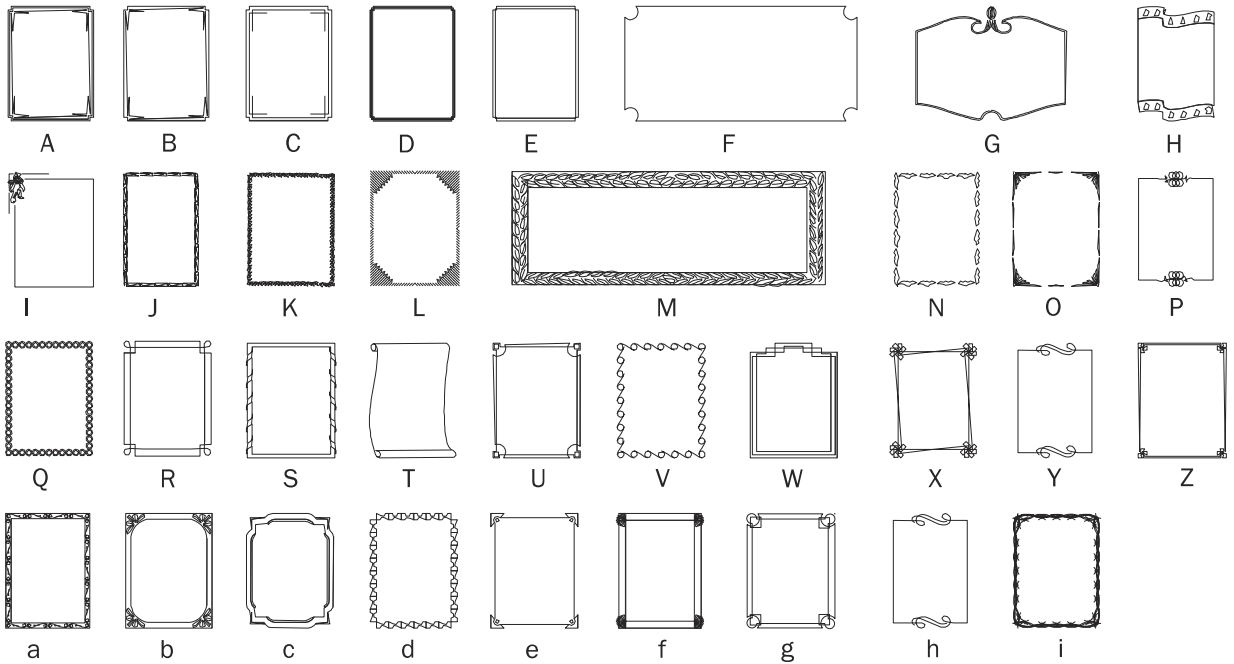
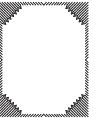
ARROWS1



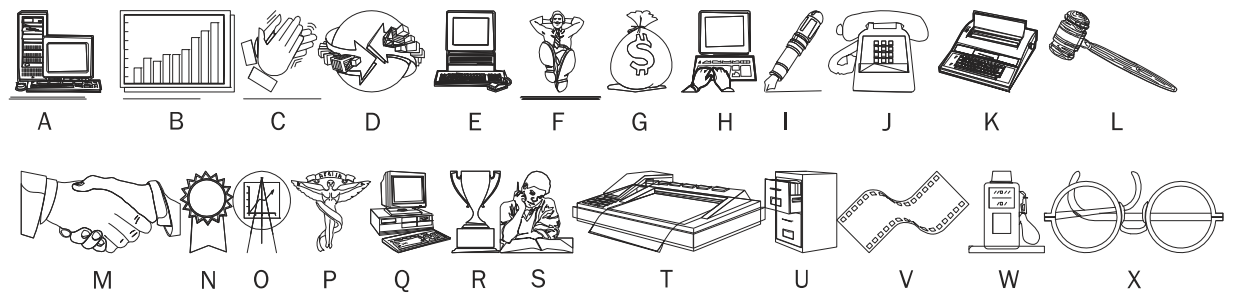
ARROWS2



BORDERS



BUSINESS





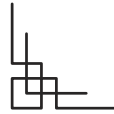
CORNERS



A



B



C



D



E



F



G



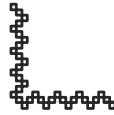
H



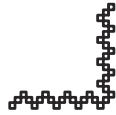
I



J



K



L



M



N



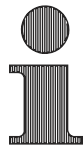
O



P



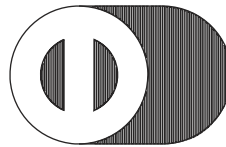
CREDIT



A



B



C



D

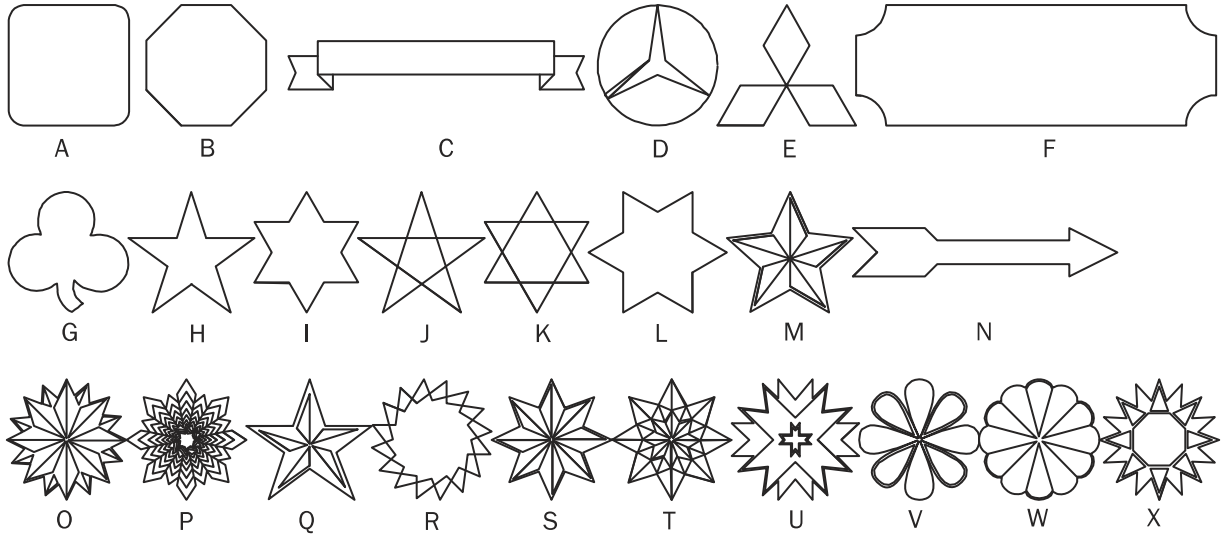


E

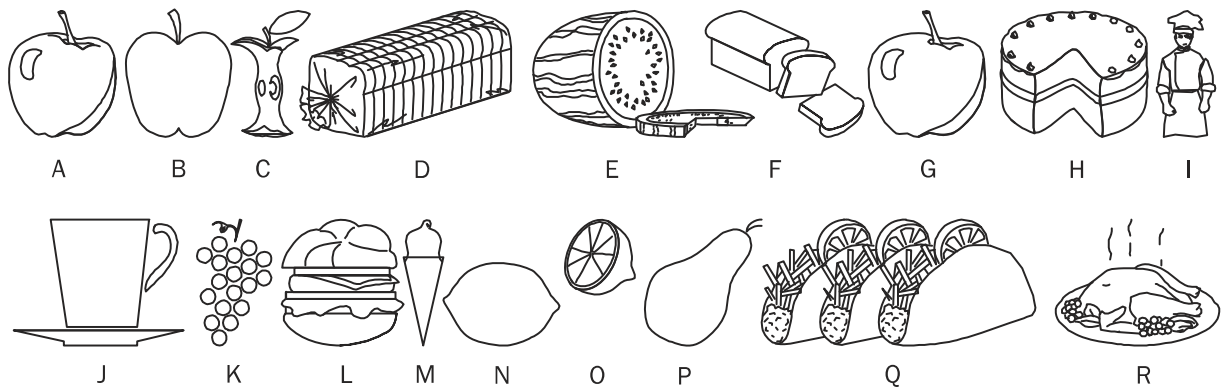


F

DESIGNS

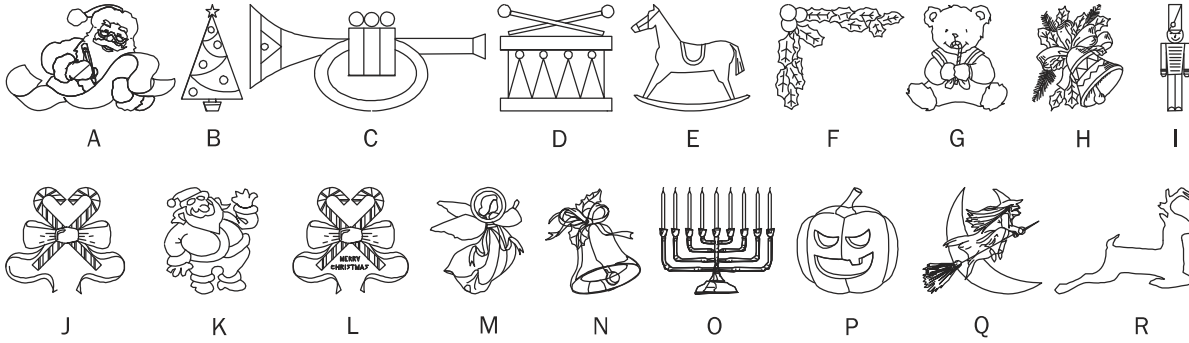


FOODS

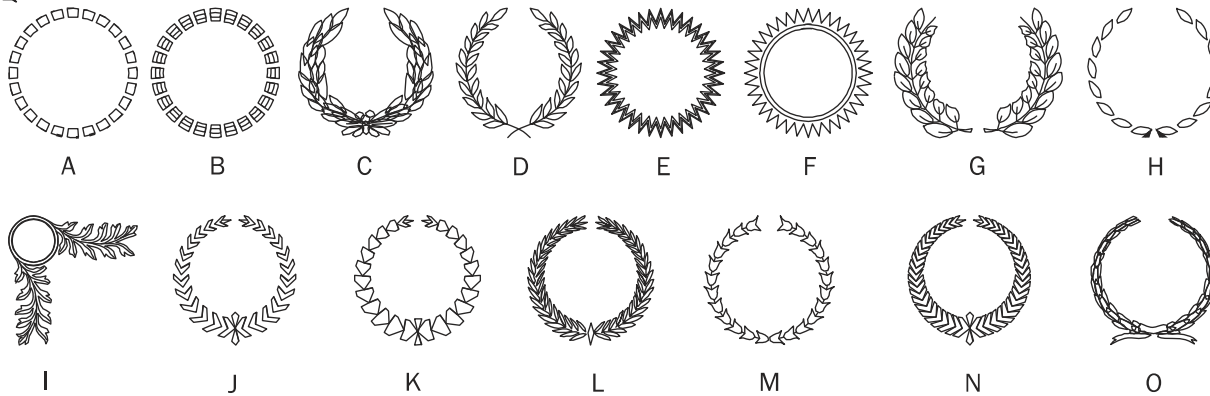




HOLIDAYS



MEDALS



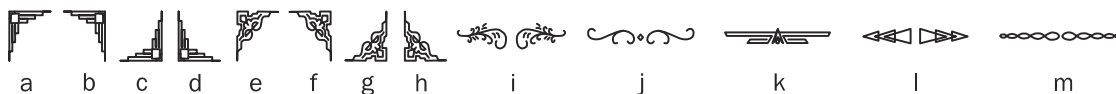
ORNAMENT



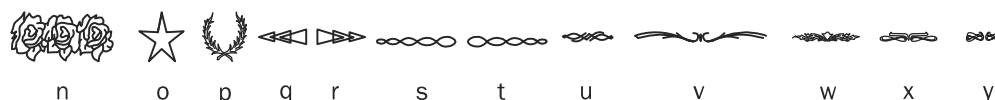
A B C D E F G H I J K L M



N O P Q R S T U V W

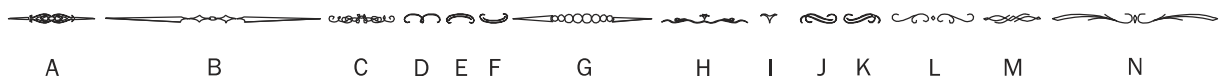


a b c d e f g h i j k l m

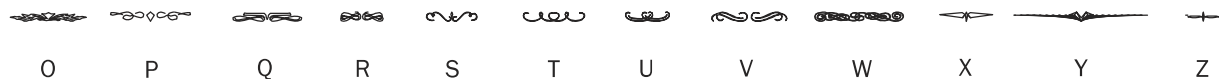


n o p q r s t u v w x y

ORNMENT2



A B C D E F G H I J K L M N



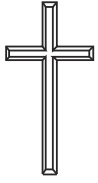
O P Q R S T U V W X Y Z



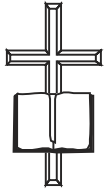
a b c d e f g h i j k



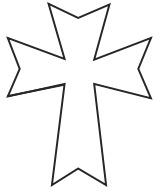
l m n o p q r s t



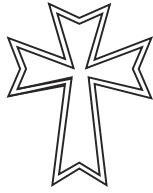
RELIGION



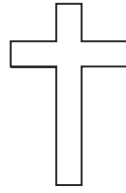
A



B



C



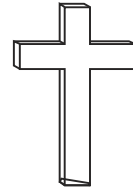
D



E



F



G



SCHOOL



A



B



C



D



E



F



G



H



I



J



K



L



M



N



O



P



Q



R



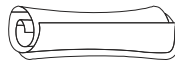
S



T



U



V



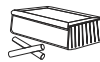
W



X



Y



Z



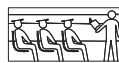
a



b



c



d



e



f



g



h



i



j



k



l



m



n



o



p



q



r



s



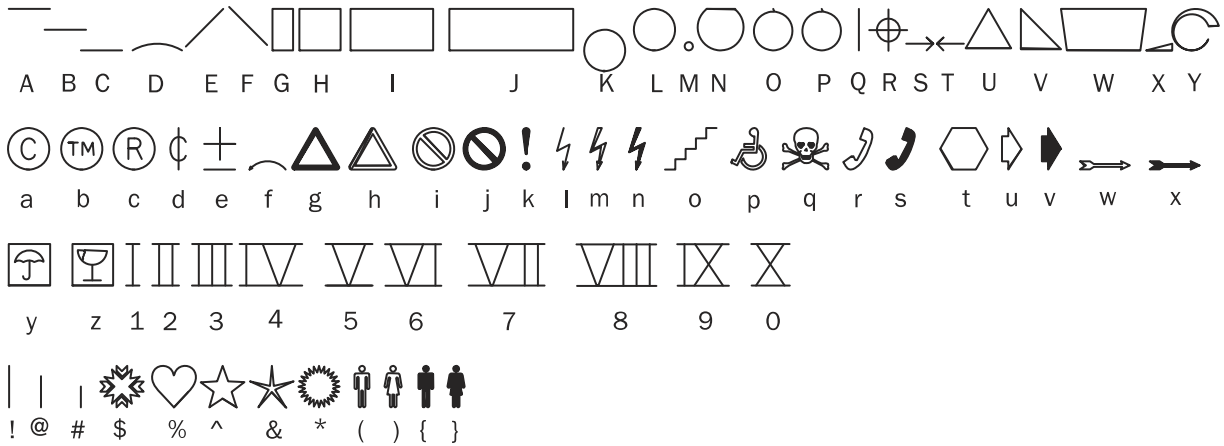
t



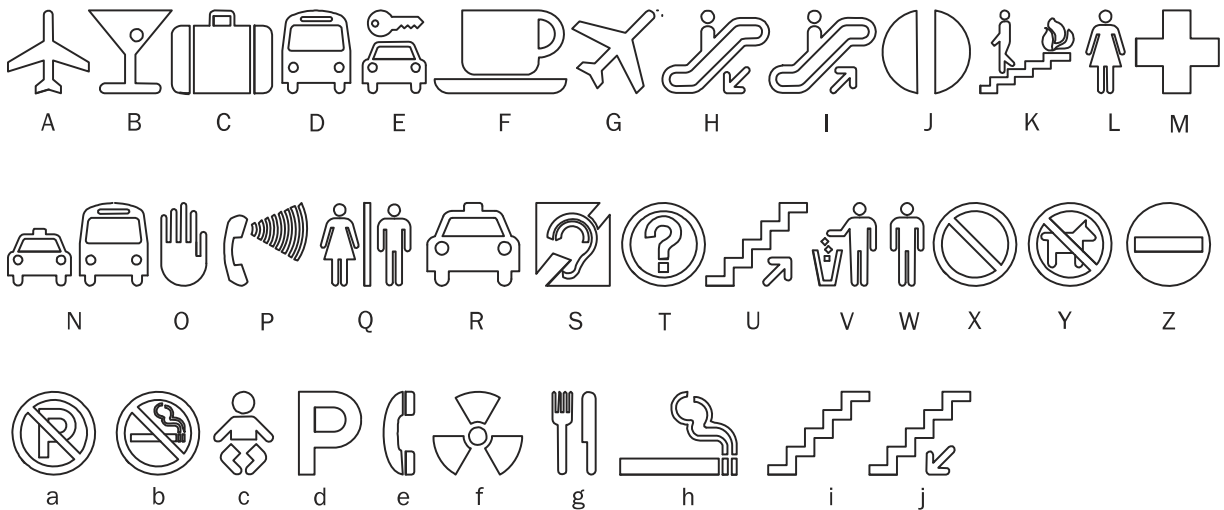
u



UTILITY



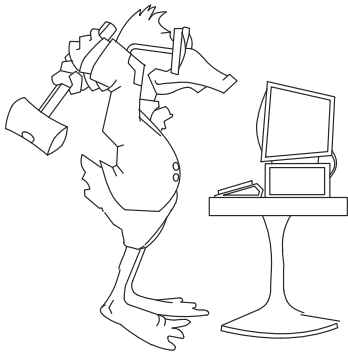
INTLSYM



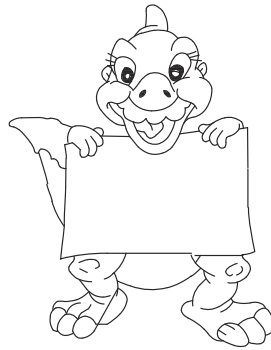
Logos can enhance your design with minimal effort.
Simply load the desired logo, and type in a capital A.
Note: You may need to use the Autoplate function to adjust the size of your graphic.



Fun Designs



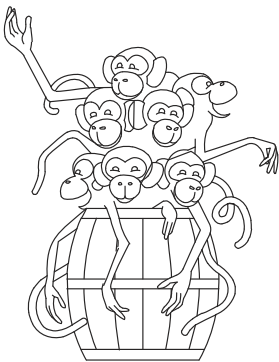
COMPDUCK



DUCKY



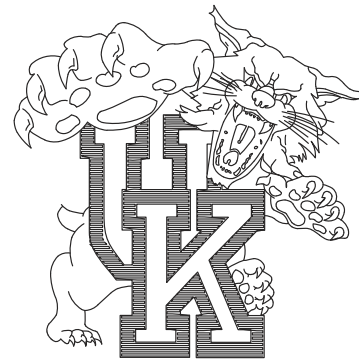
EXCALIBUR



MONKEYS

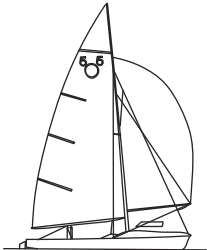


ROSE



UK

Boats



505



ALBACORE



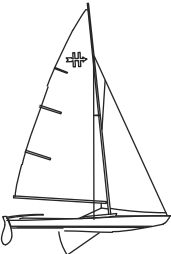
BUC



FJ



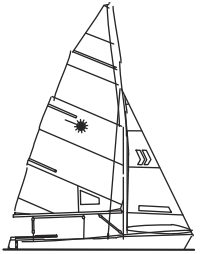
FLYSCOT



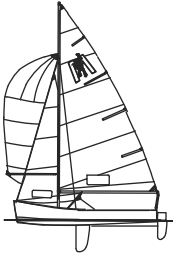
HAMPTON



LASER



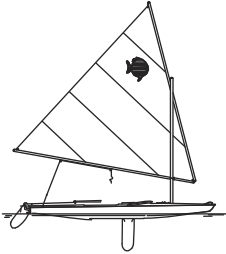
LASER2



MOBJACK



OPTIMIST



SUNFISH



THISTLE

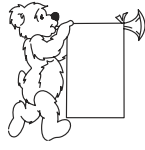
Bears



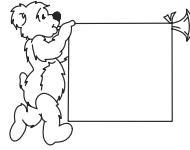
BEAR1



BEAR2



BEAR3



BEAR3A



BEAR4



BEAR5



BEAR6



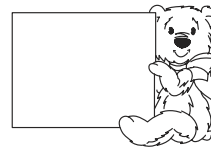
BEAR7



BEAR8



BEAR9



BEAR9A



BEAR10



BEAR11



BEAR12



BEAR13



BEAR14



BEAR15



BEAR16



BEAR17



BEAR18



BEAR19



BEAR20



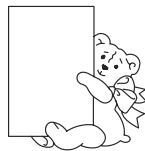
BEAR21



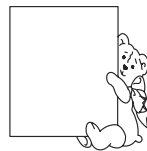
BEAR22



BEAR23



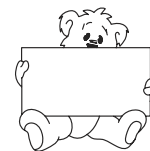
BEAR24



BEAR24A



BEAR25



BEAR26



BEAR27



BEAR28



BEAR29

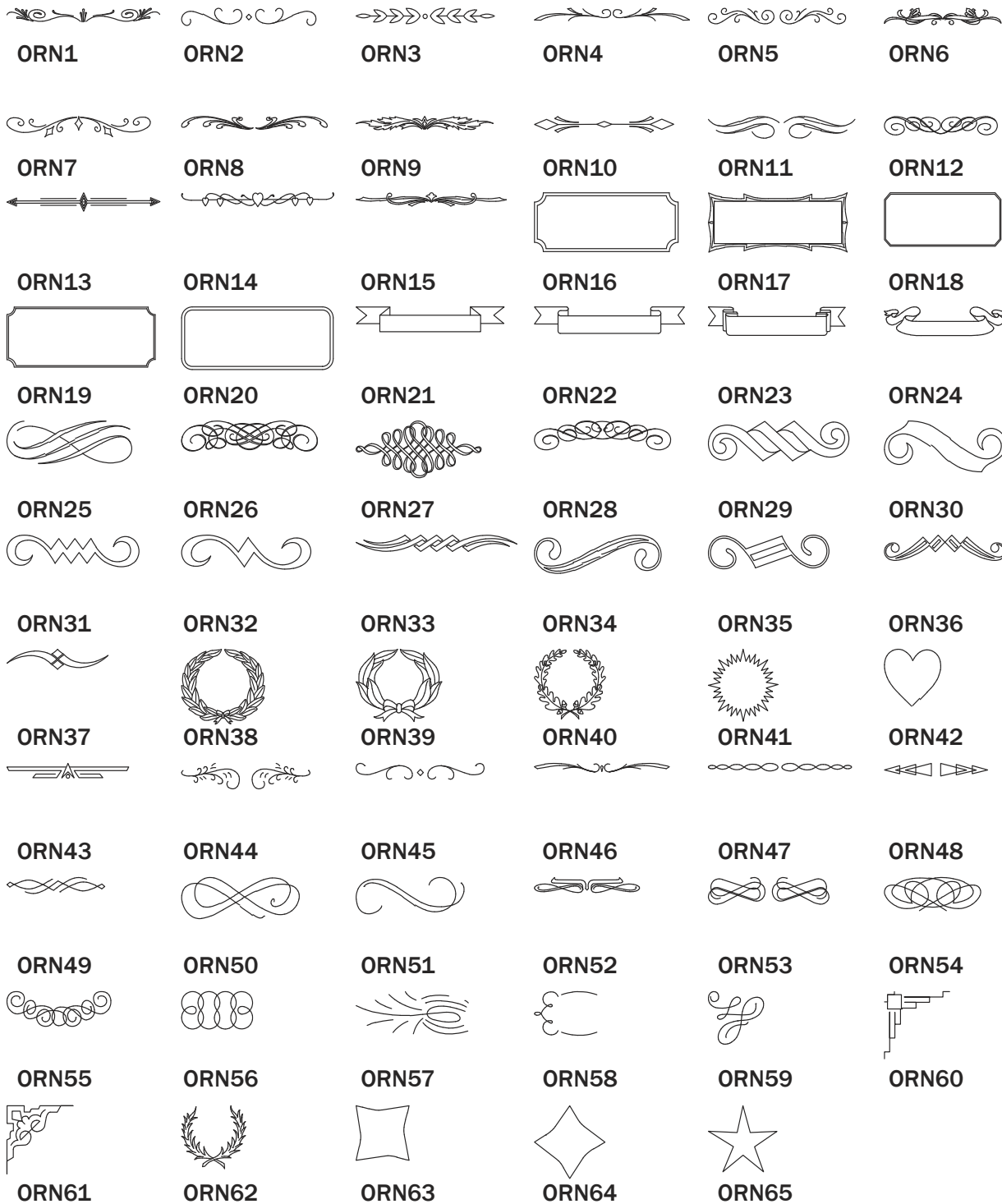


BEAR30

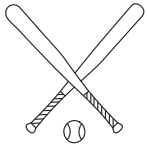


BEAR31

Ornaments



Sports



BASEBAL1



BASEBAL2



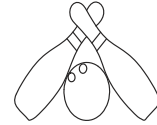
BASEF1



BASEM1



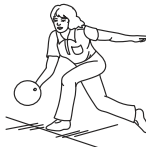
BASEM2



BOWL1



BOWL2



BOWLF1



BOWLM1



BOWLM2



BSKTF1



BSKTF2



BSKTM1



BSKTM2



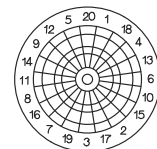
CHEERS



CYCLE1



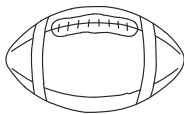
CYCLE2



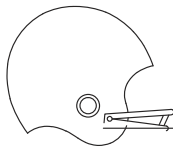
DARTS



FHOCKEY



FOOTBAL1



FOOTBAL2



FOOTBAL3



FOOTBL1



FOOTBL2



GOLFF1



GOLFF2



GOLFM1



GOLFM2



HOCKEY



RBALLF1



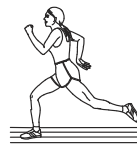
RBALLM1



RBALLM2



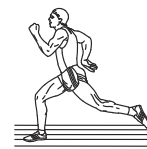
RUNNERF1



RUNNERF2



RUNNERM1



RUNNERM2

Sports



SNOSKIF



SNOSKIM1



SNOSKIM2



SOCCERF1



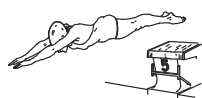
SOCCERM1



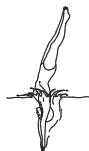
SOCCERM2



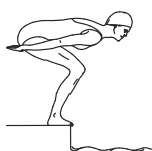
SOFTBLF2



SWIMF1



SWIMF2



SWIMF3



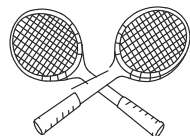
SWIMM1



SWIMM2



SWIMM3



TENNIS1



TENNISF1



TENNISF2



TENNISM1



TENNISM2



VBALF



WRESTLE



WTRSKIF1

Index

2LSCRIPT	9	GREEK1.....	20
ANIMALS	21	HANDEL.....	7
ARROWS1.....	22	HELVET1.....	7
ARROWS2.....	22	HELVET3.....	11
AVALON	5	HELVET6L.....	12
BASKERVL	15	HOLIDAYS.....	26
BEARS (LOGOS)	34	INTLSYM.....	30
BLOCK	9	ITC_SOUV	17
BOATS (LOGOS).....	33	MEDALS	26
BORDERS.....	23	MICROOUT	16
BOWLBALL	9	OLDENG3	12
BRAILLE	19	OPTIMA	12
BRAILLED.....	19	ORNAMENT.....	27
BUSINESS	23	ORNAMENTS (LOGOS)	35
CENTURY	10	ORNMENT2.....	27
CIRCMONO.....	20	RELIGION	28
CLAROUT.....	15	ROMAN3L	13
COMSCRIPT	10	RUSSIAN	20
CONSCRIPT.....	5	SCHOOL.....	28
CONTMP.....	5	SPORTS.....	29
CORNERS.....	24	SPORTS (LOGOS).....	36
CREDIT	24	STATES	29
DESIGNS	25	STENCIL.....	17
DIN1451	6	STENGOTH	8
DYNAMO	15	STYMIE.....	8
FLORA-B.....	10	TBKOUT	17
FLORA-N.....	11	TIMES3.....	13
FOODS.....	25	TIMESOUT	18
FRITZMED	11	TRIMVIR	18
FRITZOUT	16	ULROMAN	13
FUN DESIGNS (LOGOS).....	32	UNIVER39	14
FUT1LINE	6	UNIVER55	14
FUT1LINE	6	UTILITY	30
GOTHIC.....	7	VICTORIA.....	14
GOUDYOUT.....	16		